

## **EU Asia-Link Programme**

# **PEATWISE**

**New Educational Tools for Sustainable Management of Peatlands in  
the Humid Tropics**

**Project Establishment & Initialisation Workshop**

**10 April 2003**

**Wageningen, The Netherlands**

# Programme Thursday 10 April 2003

## Morning:

**9.00 – 10. 30 hrs Pre-discussions (Alterra-ILRI)**

**11.00 – 12. 00 hrs Visit Centre of Geo-Information  
(Alterra)**

**Lunch at Alterra**

## Afternoon:

**14.00 – 17.00 hrs: Initialisation Meeting (ILRI)**

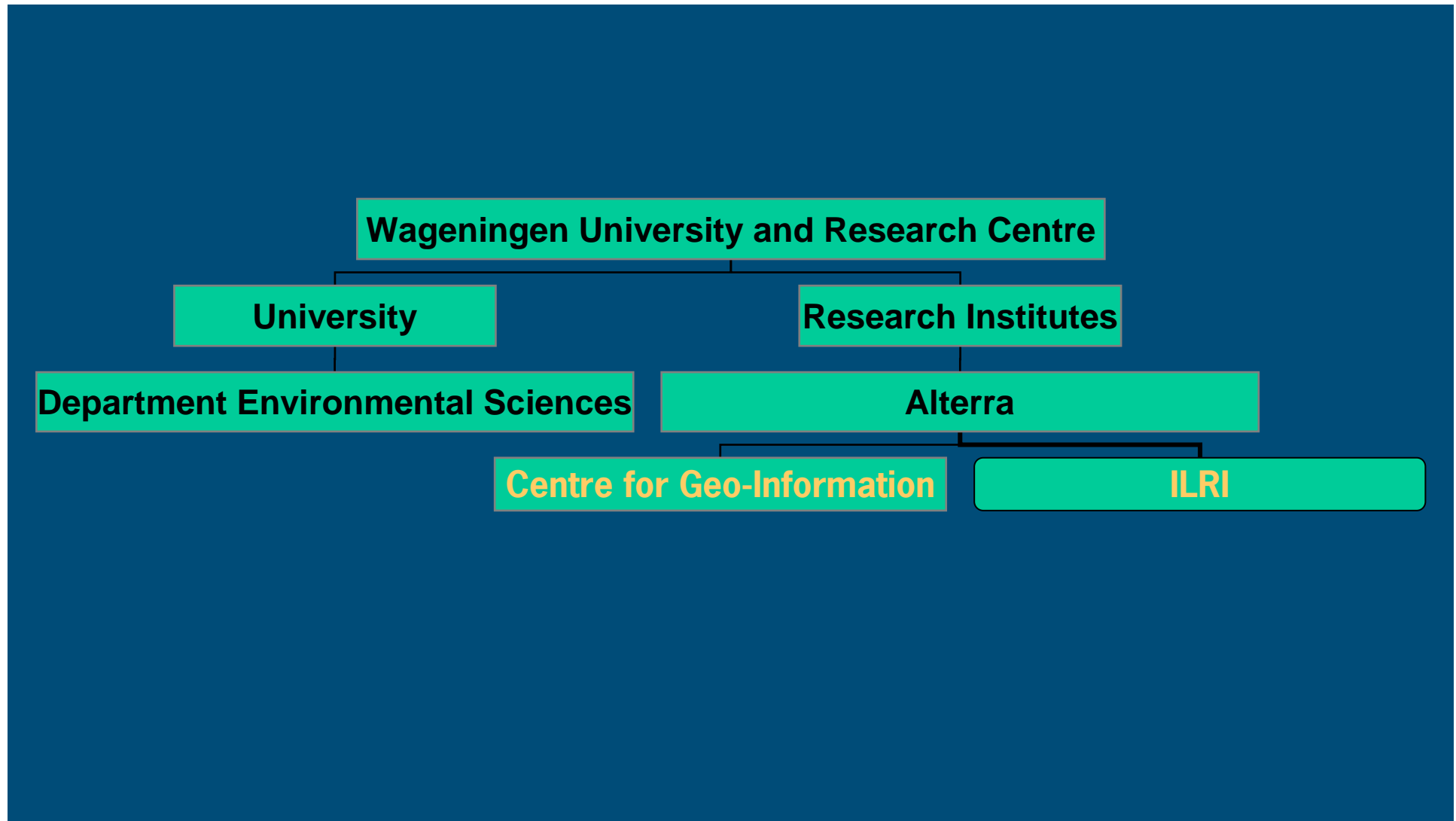
## Diner:

**19.00 hrs hoisted by Alterra-ILRI**

# Programme: Initialisation Meeting

- Introduction and project expectations of each partner:  
WUR – Alterra UNIMAS UNILEIC UNIPAR
- Project Synopsis
- Organizational Structure / project management
- Finances and accounting
- Project planning 2003 – 2006
- Detailed planning Phase 1
- Output

# Wageningen University and Research Centre



## PEATWISE - OBJECTIVE

**To develop a curriculum on the sustainable development of peatlands by the introduction of innovative educational methods and tools, in order to promote the wise use of the resource and to enhance sustainable economic development, particularly in the areas of Sarawak and Central Kalimantan, Borneo (Malaysia and Indonesia).**

# PEATWISE - PARTNERS

- **Wageningen University and Research Centre**
- **University of Leicester**
- **Malaysia Sarawak University**
- **Palangka Raya University**

# PEATWISE - OUTPUT

- 1. Study material (including Distance Learning Modules) tested, evaluated and introduced/embedded in the curriculum.**
- 2. Improved skills and expertise of Students and University Staff.**
- 3. Exchange of information (including Infrastructure).**

# PEATWISE – 3 PHASES

## 1. Inception (3 months)

- \* Market needs
- \* Existing curricula, courses & infrastructure

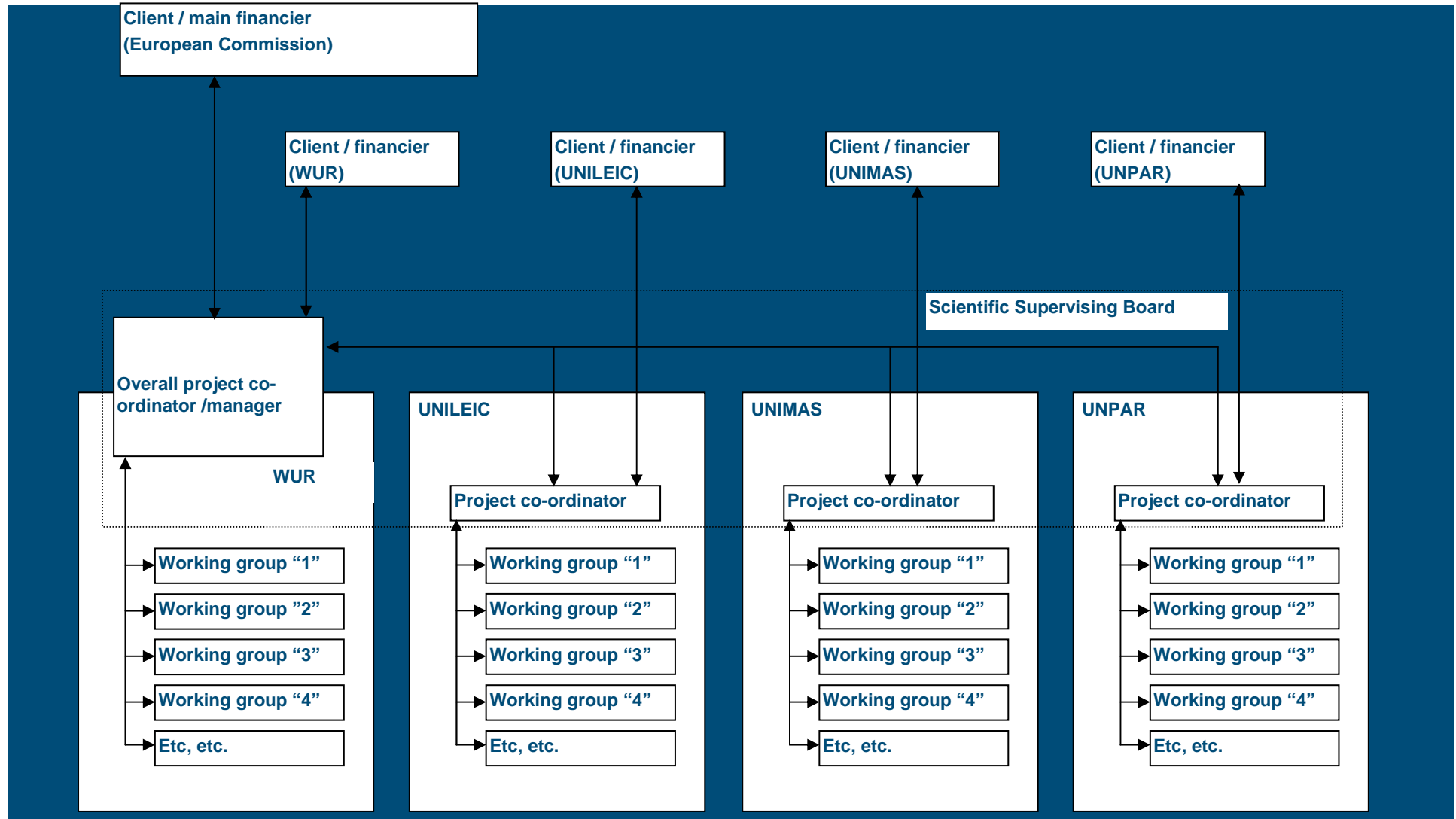
## 2. Development of curriculum (21 months)

- \* Academic infrastructure
- \* 6 (distance learning) modules

## 3. Implementation (12 months)

- \* Marketing
- \* Training
- \* Testing & evaluation

# PEATWISE – PROJECT MANAGEMENT STRUCTURE



# PEATWISE - BUDGET

	<b>Applicant's Contribution</b>	<b>EU Contribution</b>
<b>UNILEIC</b>	<b>33,732.33</b>	<b>75,000.00</b>
<b>UNIMAS</b>	<b>37,499.43</b>	<b>75,000.00</b>
<b>UNIPAR</b>	<b>25,972.32</b>	<b>75,000.00</b>
<b>WUR</b>	<b>29,429.33</b>	<b>75,000.00</b>
<b>TOTAL</b>	<b>126,633.40</b>	<b>300,000.00</b>

# PEATWISE – PHASE 1

Month	Activity number	Activity	Location (city)	Partner
1	1	Start of Phase 1: Inception.	Wageningen	UNIMAS, UNPAR, WUR, UNILEIC
1	1 (a)	Project establishment Initialisation (workshop).	Wageningen	UNIMAS, UNPAR, WUR, UNILEIC
1	1 (b)	Market needs / required expertise profiles / volume of expertise	Kuching and Palangka Raya	UNIMAS, UNPAR
1	1 (c)	Existing curricula and courses	Kuching, Palangka Raya, Wageningen, Leicester	UNIMAS, UNPAR, WUR, UNILEIC
1-2	1 (d)	Educational infrastructure	Kuching and Palangka Raya	UNIMAS, UNPAR
2	1 (e)	Synthesis Phase 1	Kuching and Palangka Raya	UNIMAS, UNPAR
2-3	1 (f)	Workshop & work plans for Phase 2	Kuching and Palangka Raya	UNIMAS, UNPAR, WUR, UNILEIC
4	1 (f)	Inception Report (Phase 1)	Wageningen	WUR