



EU Asia-Link Programme

PEATWISE

**New Educational Tools for Sustainable
Management of Peatlands in the Humid
Tropics**



University of
Palangka Raya



University of Sarawak
UR



Introduction of the Partners

- University of Leicester, UK
- University of Palangka Raya, Indonesia
- University of Sarawak, Malaysia
- Wageningen University and Research Centre, Alterra-ILRI, The Netherlands



University of
Palangka Raya



University of Sarawak



Objectives

- To develop a curriculum
- Introduction of innovative educational methods and tools
- To promote the wise use of the peatland resources
- To enhance sustainable economic development, particularly in the areas of Sarawak and Central Kalimantan, Borneo (Malaysia and Indonesia).





Why is Capacity Building in Tropical Peatlands needed?

- Three quarters of the world's tropical peatlands in SE-Asia
- Global ecological significance:
 - lowland rainforest
 - many endangered species
 - carbon store
- Humid Asia:
 - 14% of the world's land area
 - 54% of the world's population
 - Population growth
 - By 2025: double food production
- Peatlands last remaining resources for reclamation





Why is Capacity Building in Tropical Peatlands needed?

- Three quarters of the world's tropical peatlands in Borneo
- Global ecological significance:
 - lowland rainforest
 - many endangered species
 - carbon store
- Humid Asia:
 - 14% of the world's land area
 - 54% of the world's population
 - Population growth
 - By 2005: double food production
- Peatlands last remaining resources for reclamation





Why is Capacity Building in Tropical Peatlands needed?

Peatlands \neq Mineral soils

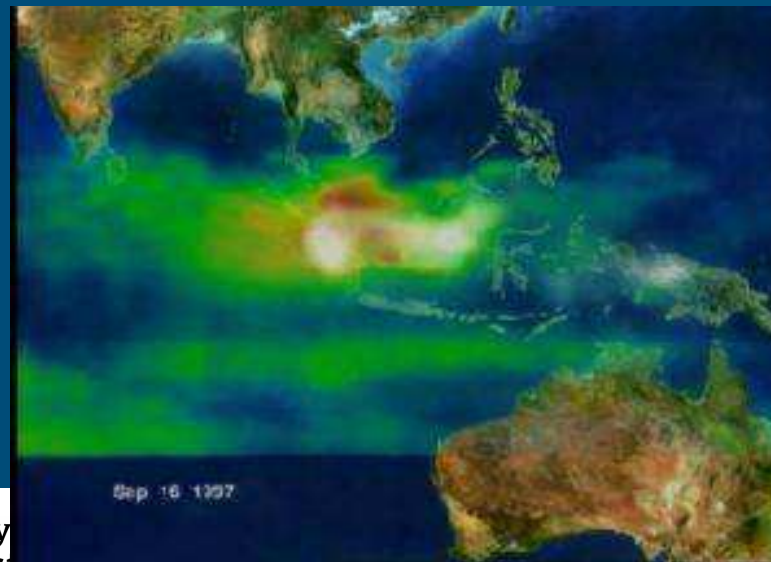
- Organic soil
- Waterlogged
- Utilisation requires drainage



consequences

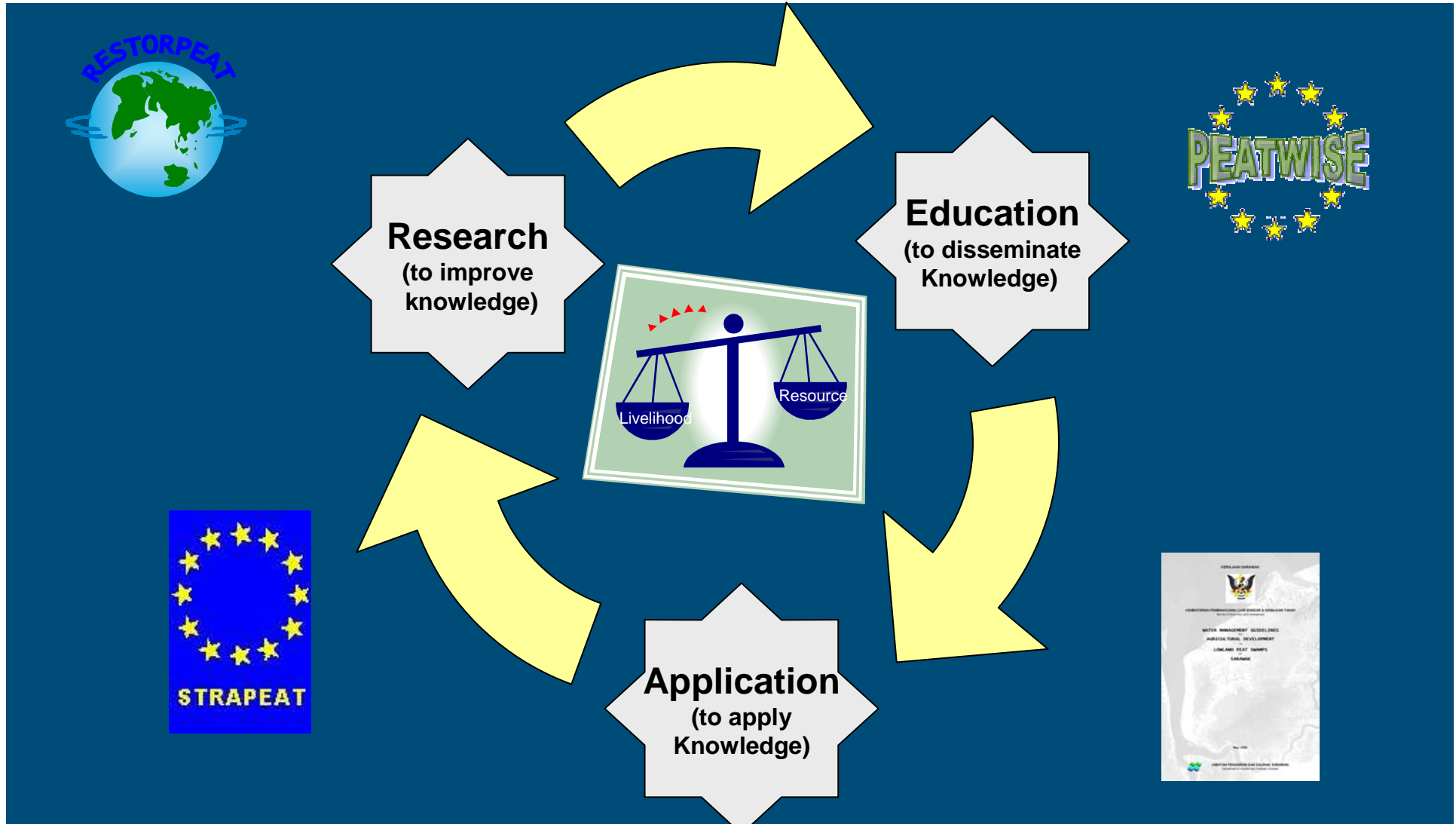


- Subsidence
- Carbon emissions



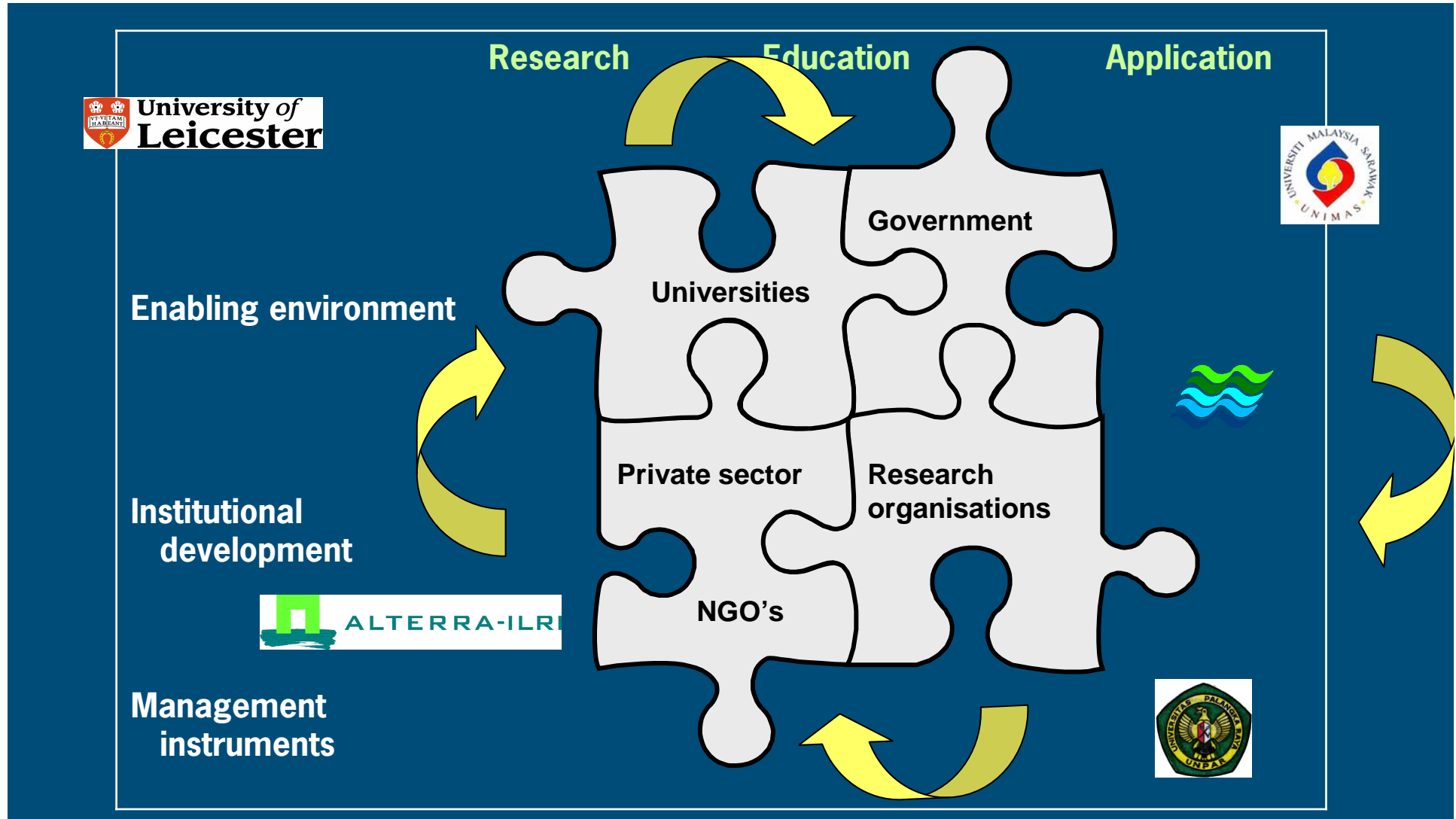


Approach





Implementation: many stakeholders





Background

RESEARCH FINDINGS

(EU-STRAPEAT, GoS-Coastal Peat Swamp Studies, GoN- Water for Food and Agriculture, etc.)



Dissemination
of knowledge



STAKEHOLDERS

(individuals and organisations involved in peatland management)



University of
Palangka Raya



University of Sarawak



Programme

- EU Asia Link Programme:
Curriculum Development



- Duration: 45 months
(April 2003 – Dec 2006)

Budget:

- EU-contribution € 300,000.-
- Partners € 127,000.-





Activities in 2006

- Curriculum Development → Modules:
 - Post-graduate course at UNIMAS 8 participants 6 modules: on Friday, Saturday and (sometimes) Sunday
 - Module development at UNPAR
- Marketing of the curriculum: IPTRID/ICID Int. Workshop Sept. 2006 in Kuala Lumpur
- Training of lecturers
- Test and evaluation
- Quality assurance
- Symposium
- Reporting
- Follow-up: new proposal



Activities Today

Evaluation of the 9-month Post-graduate Course:

Why:

- Project ends in December 2006
- Is the course a success?
- What can be improved (content, duration, method etc.) ?
- Can we disseminate the knowledge to other University?
- Is the course useful for others: universities in Peninsular Malaysia, Indonesia, Vietnam?
- Is distance learning an option?

How:

- Formulation of a new project as a follow-up: your input is highly appreciated.



Contact

Henk Ritzema (Project co-ordinator)

Alterra-ILRI

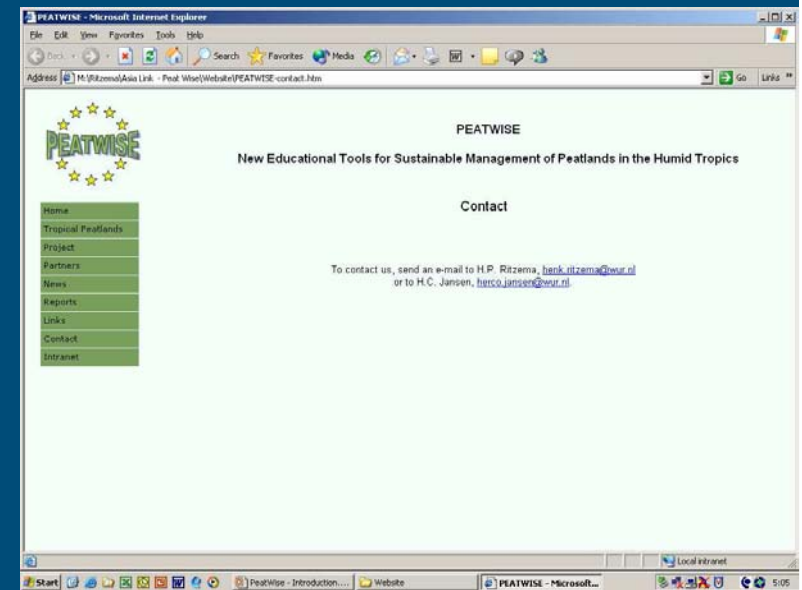
Wageningen University and Research Centre

P.O. Box 47, 6700 AA Wageningen, The Netherlands

Phone: + 31 (0)317 495 583

Web: www.peatwise.alterra.nl

E-mail: Henk.ritzema@wur.nl



University of
Palangka Raya



University of Sarawak